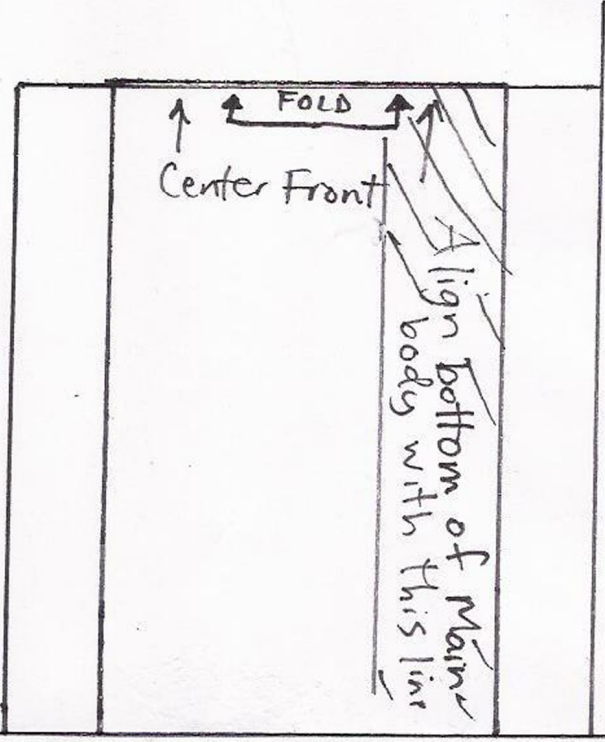


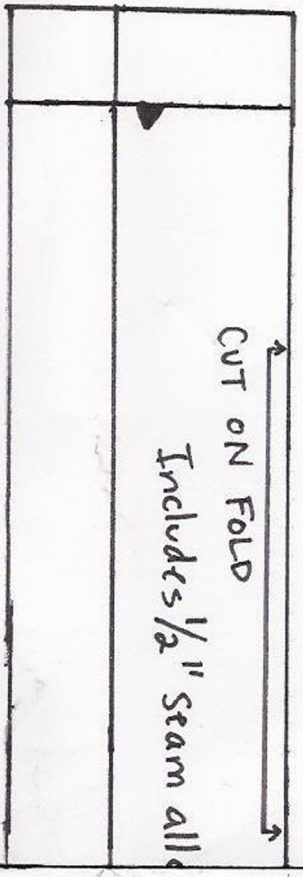
1A



1A

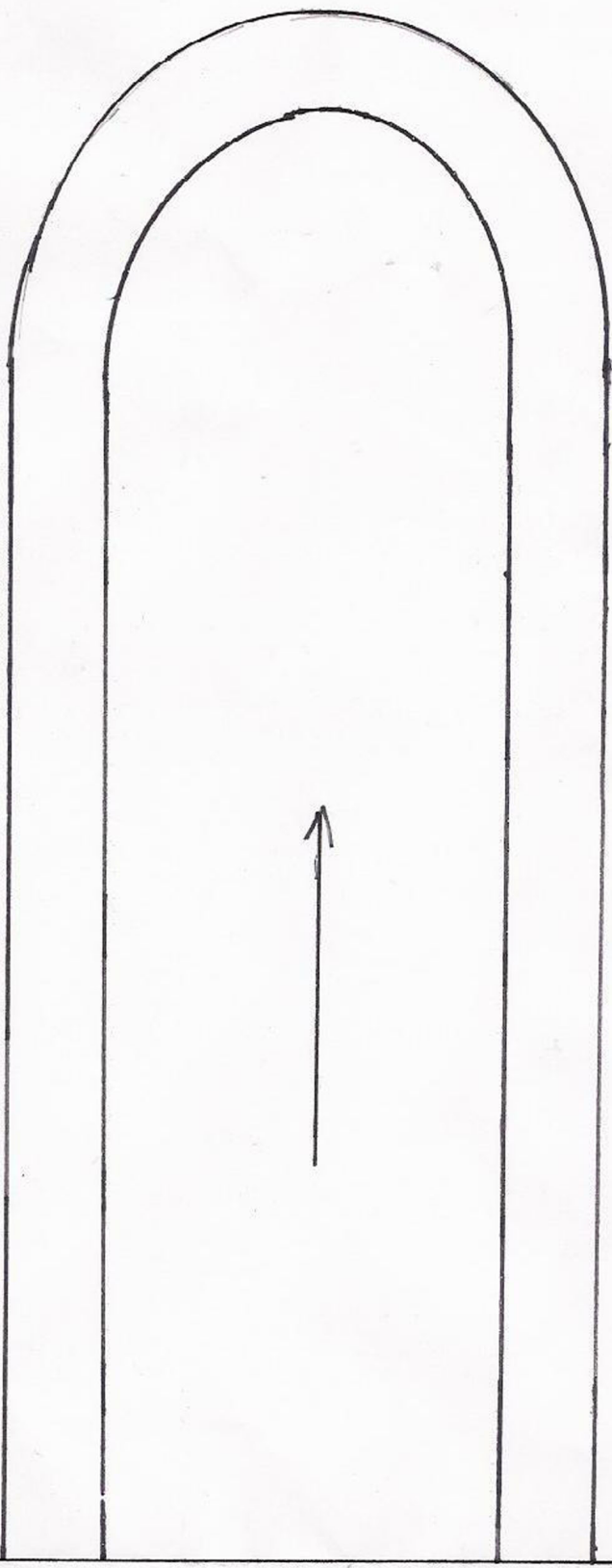
1B

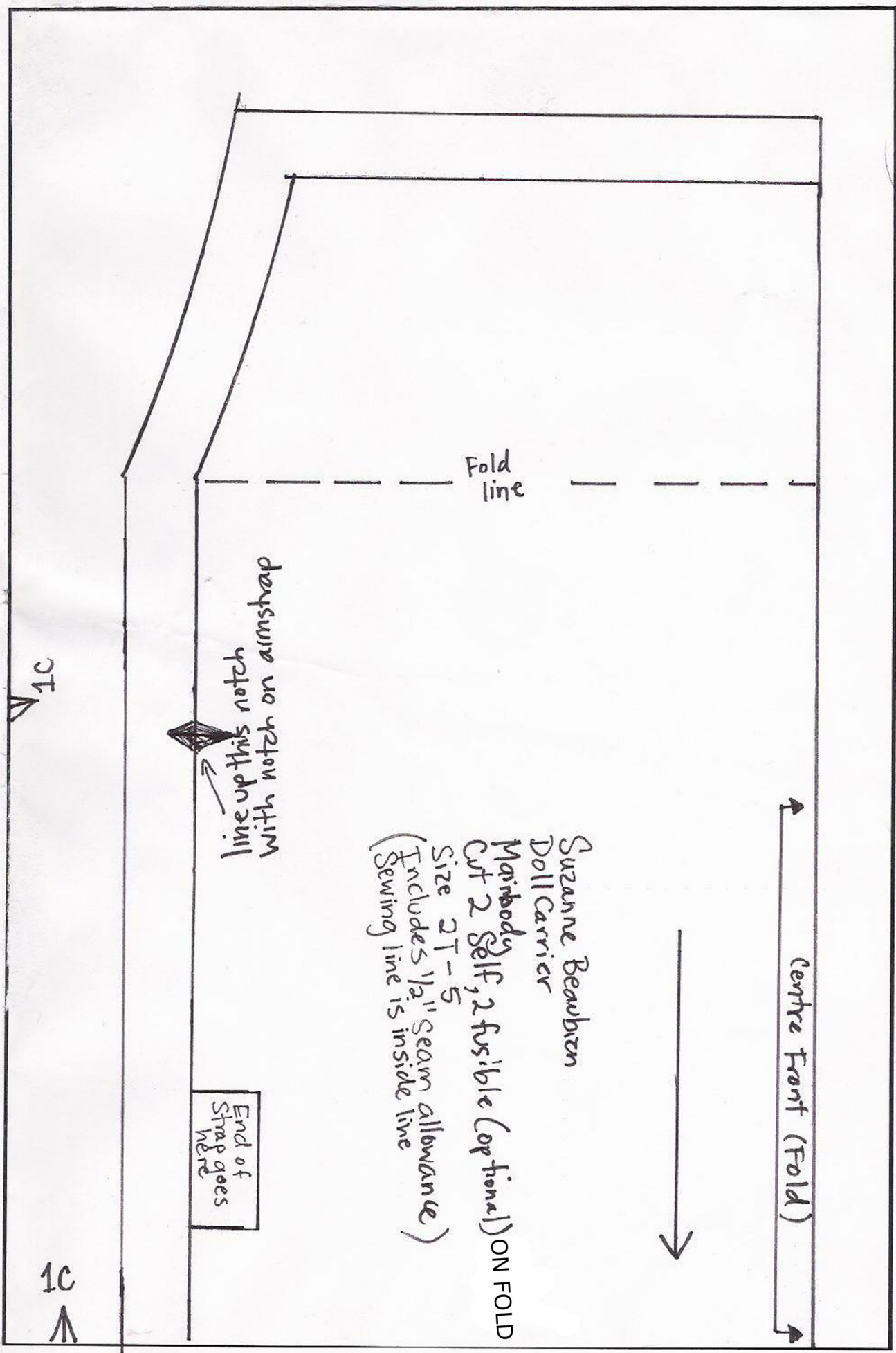
1B



CUT ON FOLD  
Includes 1/2" seam allowance

1B





Fold line

line up this notch with notch on armstrap

End of Strap goes here

Suzanne Beaubien  
 Doll Carrier  
 Mainbody  
 Cut 2 Self, 2 fusible (optional) ON FOLD  
 Size 2T-5  
 (Includes 1/2" seam allowance)  
 (Sewing line is inside line)

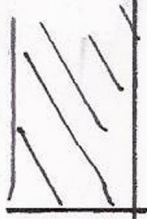
Centre Front (Fold)

1C

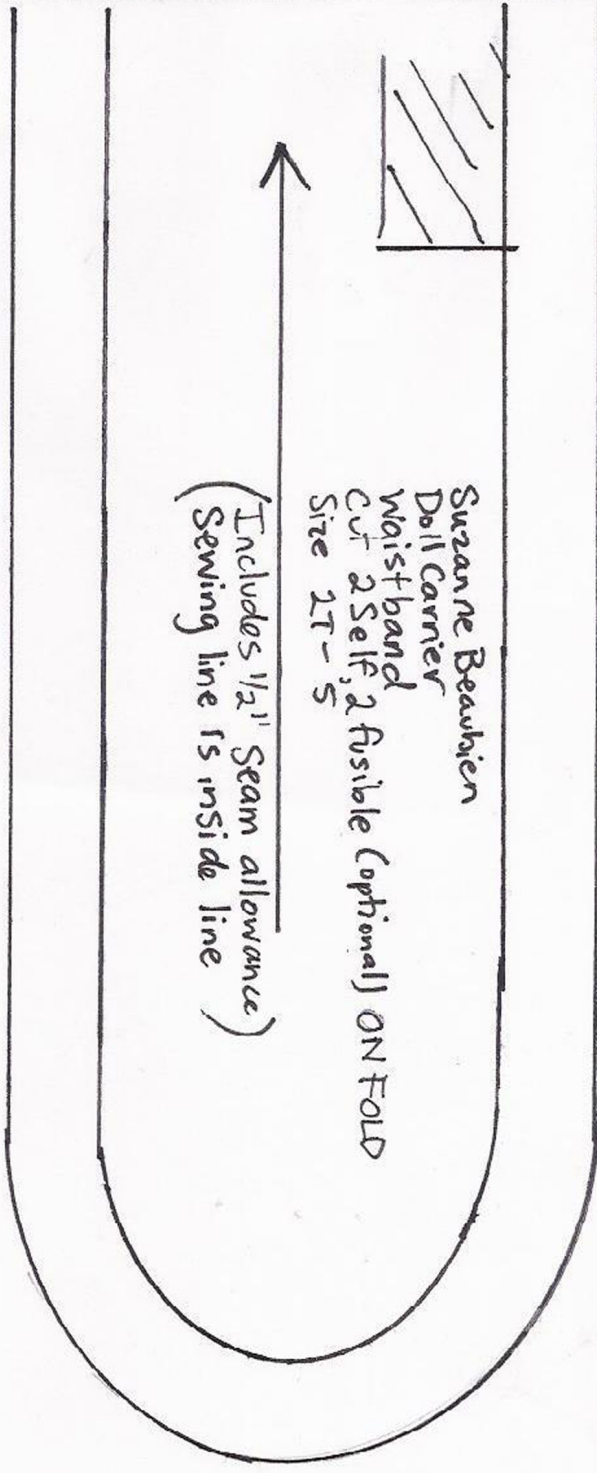
1C

V  
2A

V  
2A



Suzanne Beaubien  
Doll Carrier  
Waistband  
cut 2 Self, 2 fusible (optional) ON FOLD  
Size 1T-5  
(Includes 1/2" Seam allowance)  
(Sewing line 1s inside line)



2B

Suzanne Beaubien  
Doll Carrier  
Arm Strap  
Cut 4 Self, 4 Fusible (optional)  
Size - 2T-5  
(Includes 1/2" Seam allowance)  
(Sewing line is inside line)

Sandwich this area  
between main body pieces  
before sewing

2B

Advance

Velcro Goes Here

Suzanne Beaubien  
Doll carrier  
Chest strap (plus 2  
cut 2 on fold (Fusible))

2B

2C

Sandwich this area between  
two layers of waistband

2C

Test Square

4" x 4"

(10 cm x 10 cm)